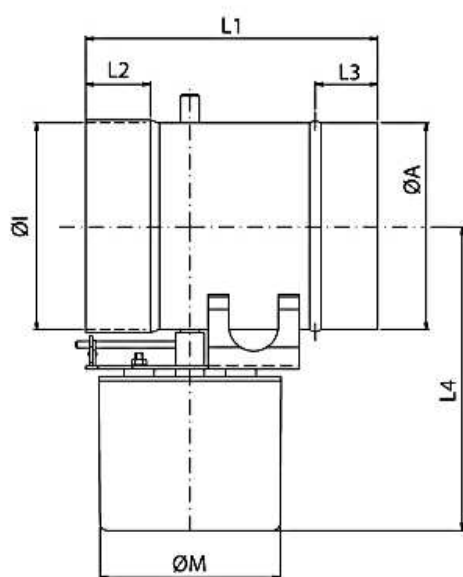


Abmessungen/Technische Daten*

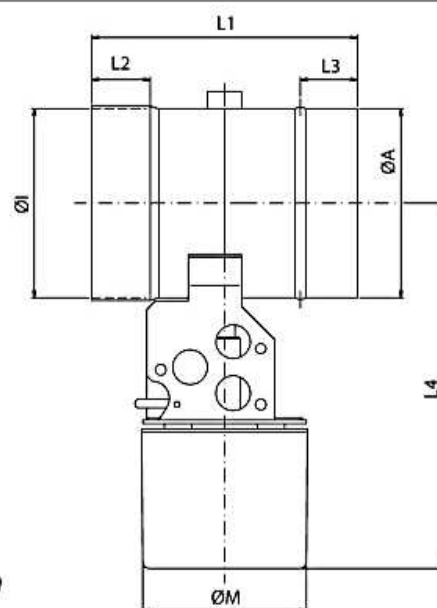
MOK...	ø	80	90	100	110	120	130	150	160	180	200	225	250	300	350	400
L1 ± 5	mm	197,0	197,0	197,0	197,0	197,0	197,0	197,0	197,0	197,0	197,0	197,0	197,0	197,0	330,0	330,0
L2 ± 3	mm	55,0	55,0	55,0	55,0	55,0	55,0	55,0	55,0	55,0	55,0	55,0	55,0	55,0	55,0	55,0
L3 ± 3	mm	48,0	48,0	48,0	48,0	48,0	48,0	48,0	48,0	48,0	48,0	48,0	48,0	48,0	48,0	48,0
L4 ± 10	mm	147,0	152,0	157,0	162,0	167,0	172,0	182,0	187,0	197,0	207,0	219,0	232,0	257,0	282,0	307,0
ØI + 0,5 / - 0	mm	80,0	90,0	100,0	110,0	120,0	130,0	150,0	160,0	180,0	200,0	225,0	250,0	300,0	350,0	400,0
ØA + 0 / - 0,5	mm	79,5	89,5	99,5	109,5	119,5	129,5	149,5	159,5	179,5	199,5	224,5	249,5	299,5	349,5	399,5
ØM ± 10	mm	90,0	90,0	90,0	90,0	90,0	90,0	90,0	90,0	90,0	90,0	90,0	90,0	90,0	90,0	90,0
Wandstärke	mm	0,8	0,8	0,8	0,8	0,8	1,0	1,0	1,0	1,0	1,0	1,0	1,0	1,0	1,5	1,5
ζ-Wert geschlossen	-	ca. 120														
ζ-Wert offen	-	< 1,2														
Maximale Abgastemperatur	°C	400														

MOK...AD	ø	80	90	100	110	120	130	150	-	180	200	-	250	300	350	400
L1 ± 5	mm	186,0	186,0	186,0	186,0	186,0	186,0	186,0		186,0	186,0		186,0	186,0	330,0	330,0
L2 ± 3	mm	55,0	55,0	55,0	55,0	55,0	55,0	55,0		55,0	55,0		55,0	55,0	55,0	55,0
L3 ± 3	mm	55,0	55,0	55,0	55,0	55,0	55,0	55,0		55,0	55,0		55,0	55,0	55,0	55,0
L4 ± 10	mm	197,0	202,0	207,0	212,0	217,0	222,0	232,0		247,0	257,0		282,0	307,0	332,0	357,0
ØI + 0,5 / - 0	mm	80,0	90,0	100,0	110,0	120,0	130,0	150,0		180,0	200,0		250,0	300,0	350,0	400,0
ØA + 0 / - 0,5	mm	79,5	89,5	99,5	109,5	119,5	129,5	149,5		179,5	199,5		249,5	299,5	349,5	399,5
ØM ± 10	mm	90,0	90,0	90,0	90,0	90,0	90,0	90,0		90,0	90,0		90,0	90,0	90,0	90,0
Wandstärke	mm	0,8	0,8	0,8	0,8	0,8	1,0	1,0		1,0	1,0		1,0	1,0	1,5	1,5
ζ-Wert geschlossen	-	> 600														
ζ-Wert offen	-	< 1,2														
Maximale Abgastemperatur	°C	400														

* Technische Änderungen und Irrtümer behalten wir uns vor.



MOK ...



MOK ... AD

Típus	Füstcső névleges átmérője mm	Beépítési hossz mm
MOK 80 AD	80	186
MOK 90 AD	90	186
MOK 100 AD	100	186
MOK 110 AD	110	186
MOK 120 AD	120	186
MOK 130 AD	130	186
MOK 150 AD	150	186
MOK 180 AD	180	186
MOK 200 AD	200	186
MOK 250 AD	250	186
MOK 300 AD	300	186
MOK 350 AD	350	330
MOK 400 AD	400	330